

Gebrauchsanleitung

Installation Instructions

GA-G003

14515d

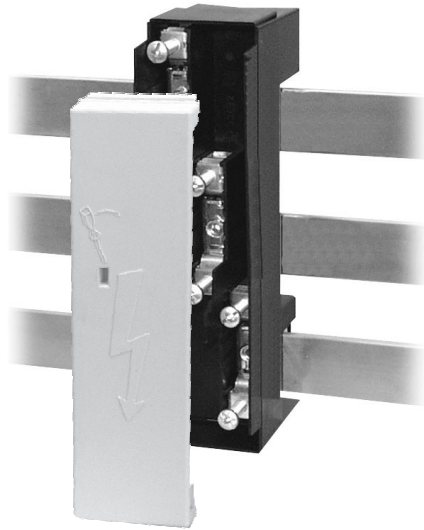


**Anschlußmodul
für 60mm
Sammelschienensysteme
3polig, 4polig**

**Connection module
for 60mm busbar systeme
3-pole, 4-pole**



**Vor Beginn der Arbeiten Gerät
spannungsfrei schalten.
Inbetriebsetzung und Wartung
nur durch Fachpersonal.
To prevent electrical shock
disconnect from power source
before installing or servicing.
Work and maintenance by
skilled staff only.**



**Anschlußart "F70"
Terminal type "F70"**

**Anzugsdrehmoment
Tightening torque**

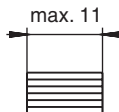
**Klemmbereich Kabel
Clamping range**



Fahrstuhlklemme / Elevator terminal

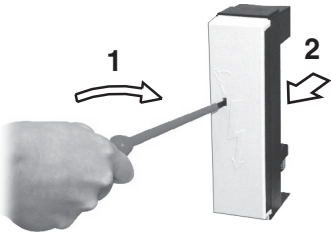
2,6 Nm

1,5 - 70 mm² Al/Cu

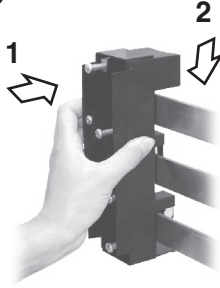


Technische Änderungen vorbehalten!
Subject to technical alterations!

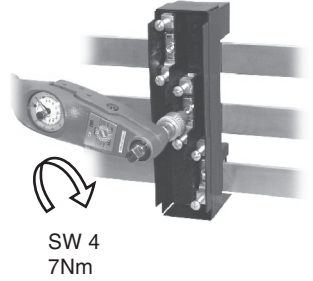
①



②

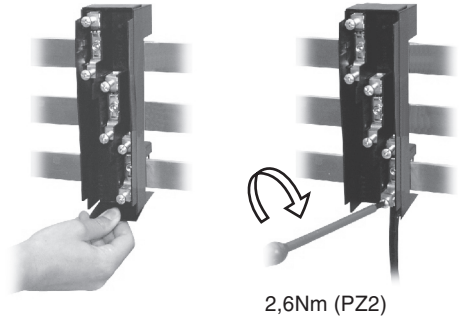
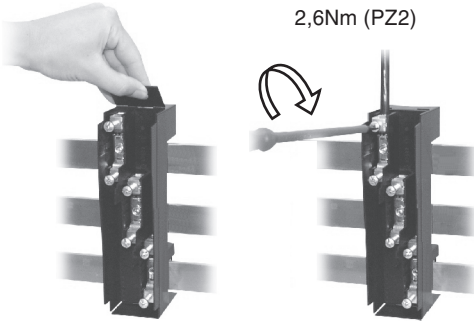


③



Abgang oben / Connection, top

Abgang unten / Connection, bottom



Durchschleifen / Past through

